

V-TAC

Meaningful Innovation.

WEEE Number: 80133970

INSTRUCTION MANUAL

LED SLIM FLOOD LIGHT WITH DIRECT CONNECTION

TECHNICAL DATA

MODEL	VT-4419-FC
SKU	23852-5
LUMENS	2400 lm
WATTS	20W
BEAM ANGLE	120°
CRI	>70
DF	>0.7
DIMENSION	161.8x152.5x57.8
INPUT VOLTAGE	AC: 220-240V, 50Hz
EFFICIENCY	120+ lm/w
BODY TYPE	Aluminium
PRODUCT WEIGHT	300g
MAX. PROJECTED AREA	24674.5



05 YEAR
WARRANTY*

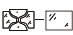
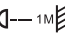
IP65
RATING

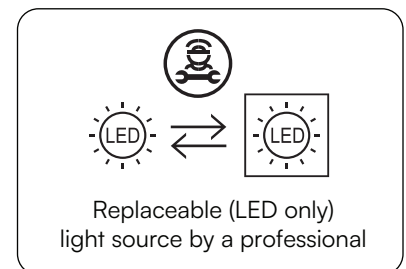
*This product contains a light source of energy efficiency class<E>, where <E> shall be replaced by the energy efficiency class of the contained light source.

INTRODUCTION & WARRANTY

Thank you for selecting and buying V-TAC product. V-TAC will serve you the best. Please read these instructions carefully before starting the installation and keep this manual handy for future reference. If you have any another query, please contact our dealer or local vendor from whom you have purchased the product. They are trained and ready to serve you at the best. The warranty is valid for 5 years from the date of purchase. The warranty does not apply to damage caused by incorrect installation or abnormal wear and tear. The company gives no warranty against damage to any surface due to incorrect removal and installation of the product. The products are suitable for 10-12 Hours Daily operation. Usage of product for 24 Hours a day would void the warranty. This product is warranted for manufacturing defects only.

WARNING

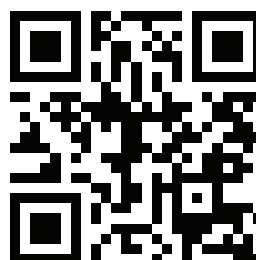
- Please make sure to turn off the power before starting the installation.
- Installation must be performed by a qualified electrician.
- The light source contained in this luminaire shall only be replaced by the manufacturer or his service agent or a similar qualified person.
- Proper grounding should be ensured throughout the installation.
- Replace any cracked protective shield. 
- Minimum distance from lighted objects 1m. 
- For outdoor use.



This marking indicates that this product should not be disposed of with other household wastes.



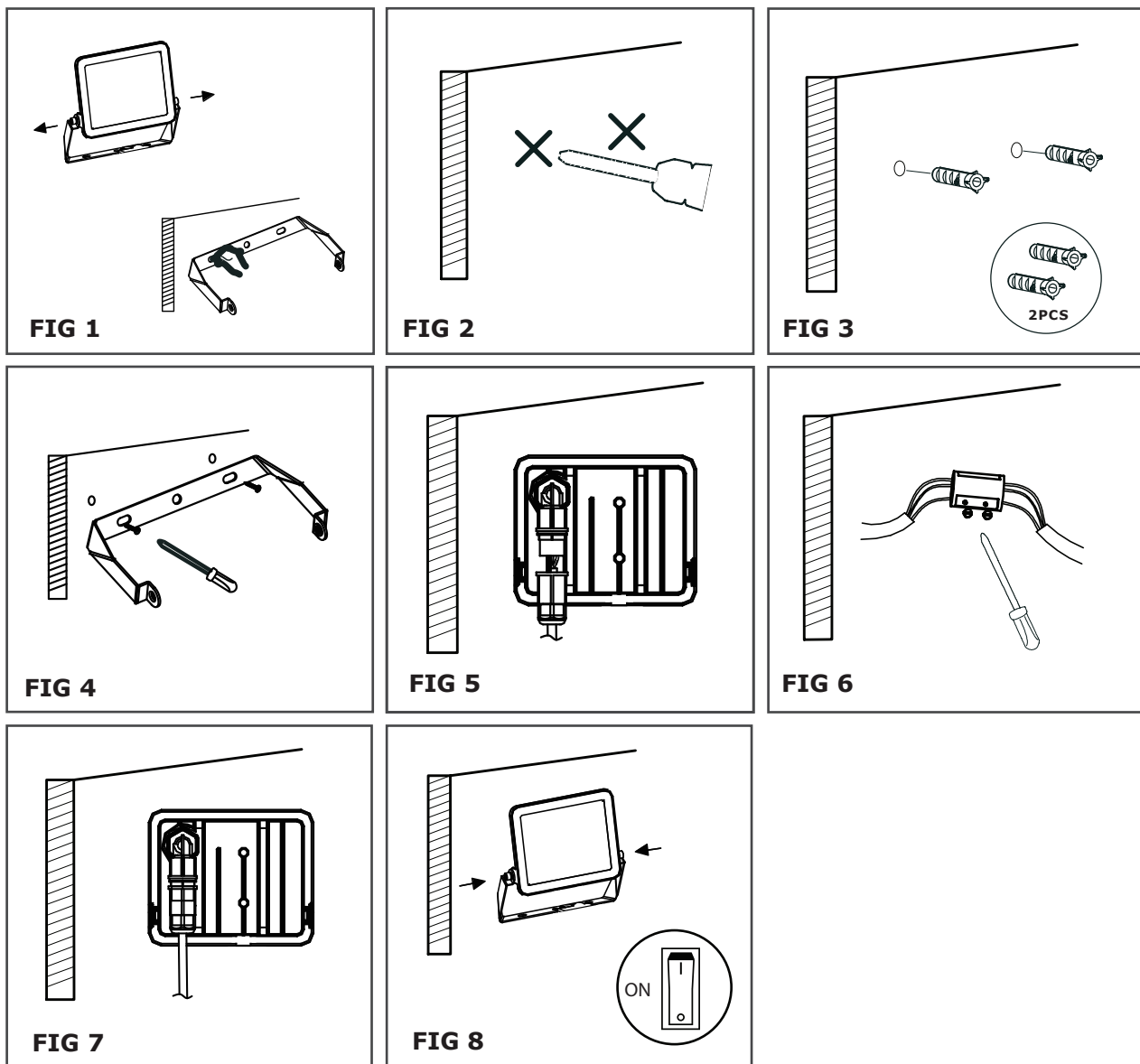
Caution, risk of electric shock.



MULTI-LANGUAGE MANUAL QR CODE

Please scan the QR code to access the manual in multiple languages.

INSTALLATION DIAGRAM



INSTALLATION INSTRUCTION

1. Switch off the power. Confirm the installation position.
2. Punch holes in building surface with impact drill.
3. Insert expansion bolt.
4. Fixed bracket.
5. Turn on the connector counterclockwise, and pass the sorted cable through the waterproof cap and connector in turn.
6. The cable is connected to the terminal, the live wire is connected and installed L, and the zero wire is connected to N, Ground wire connected to (\ominus), tighten the screw of the terminal block.
7. Turn the connector and waterproof cap clockwise, and pay attention to the fact that the waterproof joint nut must be tightened, otherwise there is a hidden danger of water leakage. The rubber covered part of the outer lead should extend into the waterproof cap for more than 15mm, otherwise there is a hidden danger of water leakage.
8. Switch on the power and test the light.

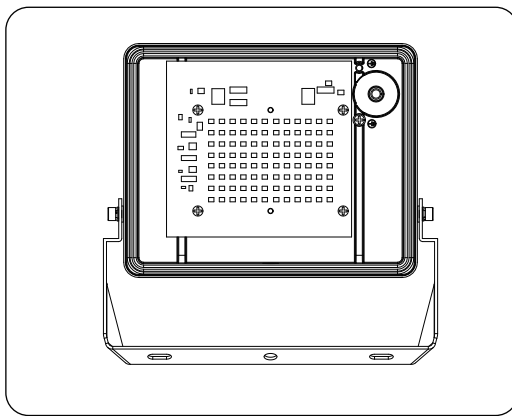
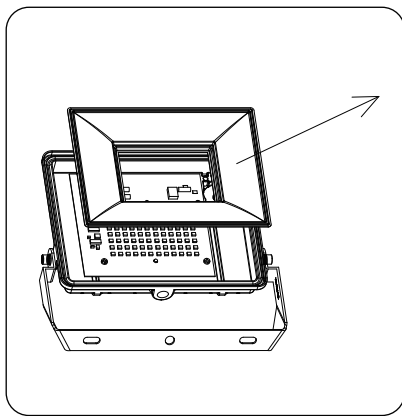
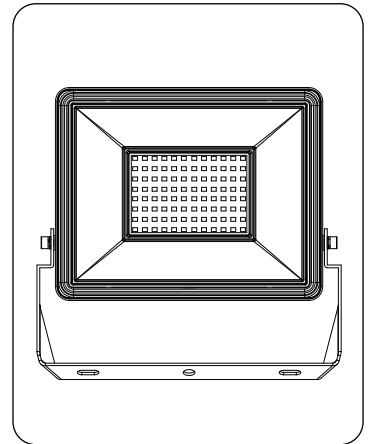
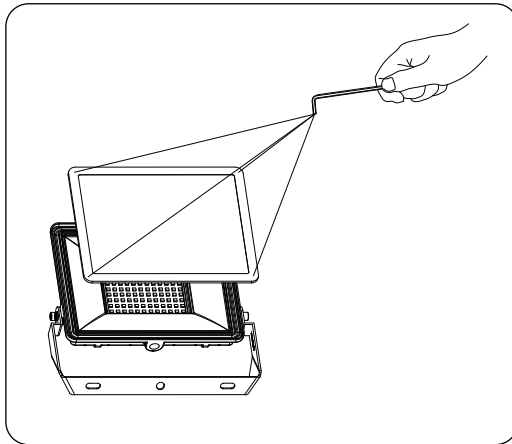
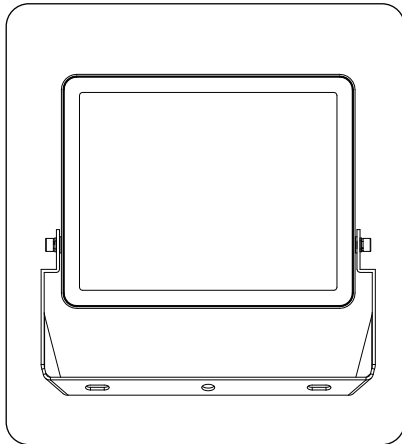
NOTE: In order to maintain the IP protection of the product, the cable entry/gland should be installed on the bottom side.



Points de collecte sur www.quefairedemesdechets.fr
Privilégiez la réparation ou le don de votre appareil !

DISMANTLING INSTRUCTIONS

(For Market surveillance team only)



Note: Light source removal will void the warranty

VTAC EUROPE LTD. IN CASE OF ANY QUERY/ISSUE WITH THE PRODUCT, PLEASE REACH OUT TO US AT: SUPPORT@V-TAC.EU
FOR MORE PRODUCTS RANGE, INQUIRY PLEASE CONTACT OUR DISTRIBUTOR OR NEAREST DEALERS.
V-TAC EUROPE LTD. BULGARIA, PLOVDIV 4000, BUL.L.KARAVELOW 9B

V-TAC UK LTD. IN CASE OF ANY QUERY/ISSUE WITH THE PRODUCT PLEASE REACH OUT TO US AT
SUPPORT@VTACEXPORTS.COM V-TAC, 5A TUNGSTEN PARK, DOWNS ROAD, WITNEY, OXFORDSHIRE, OX29 0AX

RoHS

